



**SUPPLEMENTARY REGULATION  
FIM INTERNATIONAL SIX DAYS' ENDURO (ISDE)  
IMN 401/01**

**Viña del Mar - Chile**

**November 12<sup>th</sup> to November 17<sup>th</sup> 2018**

**WORLD CHAMPIONSHIP FOR NATIONAL TEAMS**

**FIM World Trophy**

**FIM Junior World Trophy**

**FIM Women World Trophy**

**WORLD CUP**

**Club Team Award**

**Manufacturer's Team Award**

**Watling Trophy (Since 1962)**

**Assigned to the country with the best performance**

**FIM Enduro Vintage Trophy**

**LOCATION OF THE EVENT**

The event will be held at Viña del Mar, V Region, Chile.

GPS: 33° 01' 24,00" S - 71° 33' 3,00" W

TIME ZONE: GMT - 3

Currency Chilean peso (CLP):

Exchange rate: USD 1 ~ CLP 600

EUR 1 ~ CLP 737

**Access:**

Airport: Santiago - Arturo Merino Benítez (SCL)

By car: Route 68

**1. OPENING HOURS OF THE ISDE SECRETARIAT**

ISDE Secretariat will be located at the **Hotel O'Higgins**, near the paddock, and it will be open from November 7<sup>th</sup> 2018, from 9:00 am to 7:00 pm and for the following days according to the official time schedule.

**2. ENTRIES AND REGISTRATION PROCESS**

The registrations will be made only via the FIM ISDE 2018 website ([www.fim-isde.com](http://www.fim-isde.com)), Information/Registration.

The pre-registrations will be taken into account only if the payment of 25% of the entry fee has been done according to the FIM regulation.

Each FMN will receive an e-mail with a link that enables to fill up the pre-registration entry form. The FMNs will indicate the number of riders they intend to register in each category (World Trophy, Junior Trophy, Women Trophy, Club Teams & Vintage).

In order to identify the payment of the entry fees, it is **COMPULSORY** to enter the following data during your bank transfer: **FMN + NAME + ISDE 2018 + EMAIL** (of the person who has done the bank transfer).



**Payment details:  
Bank:**

NAME: FEDERACION DEPORTIVA DE MOTOCICLISMO DE CHILE  
 BANK: BANCO DE CHILE  
 ACCOUNT NUMBER (US DOLLARS): 05-18202644-07  
 SWIFT: BCHICLRM  
 ADDRESS:  
 RAMON CRUZ 1176 OF.511  
 NUNOA  
 SANTIAGO  
 CHILE  
 POSTAL CODE: 7760566

Contact for entries: [fmc@fmc.cl](mailto:fmc@fmc.cl)

The Federations have to support the costs for the bank transfers and the exchange costs. The FMC has to be credited with the entry fees amounts below:

Teams	Total entry fee per rider EUROS	25% of the entry fee per rider EUROS
FIM World Trophy and Junior Trophy	900	225
FIM Women Trophy	750	190
Men Club Teams	900	225
Women Club Teams	750	190
Vintage	300	75

Deadline for pre-registration paid: **March 30<sup>th</sup> 2018.**

The Federations will receive by e-mail the teams number accepted by nation by **April 9<sup>th</sup> 2018**, with a user name and a password in order to fill in the entry form for each rider, via the website [www.fim-isde.com](http://www.fim-isde.com).

**ENTRIES:**

**THE FIM WORLD TROPHY**

The ISDE is a FIM World Championship competition for national teams. Each FMN may enter one national team composed of **four or three riders**. Each of these riders must be holder of a passport of the country which he represents.

**THE FIM JUNIOR WORLD TROPHY**

This is a competition in which each FMN, member of the FIM, has the right to nominate and enter one national team. The team shall consist of **three riders** under 23 years of age (at 1<sup>st</sup> January of the year of the event). Each of these riders must be holder of a passport of the country which they represent.

**THE FIM WOMEN'S WORLD TROPHY**

This is a competition for the FIM Women's World Trophy for which each constituent FMN may nominate and enter one national team. The team shall consist of **three or two women riders**. Each of these riders must be holder of a passport of the country which they represent.



### **THE FIM CLUB TEAM AWARD**

This is a competition into which each constituent FMN of the FIM may enter one or more teams. A Club Team (CT), consisting of three riders, can either be nominated by a bona fide local motorcycling club affiliated to and vouched for as such by the nominating FMN, in which case the three riders must have the nationality of the country to which the club belongs, or consist of three riders of different nationalities but under the same FIM Continental Union. In this case, the FMN of each rider must give its approval and they must be entered by the FMN of one of the riders.

### **THE FIM ENDURO VINTAGE TROPHY**

A National Team shall consist of **three riders** which must represent three Classic categories on the four Classic categories of the Vintage Trophy.

### **SCHEDULE**

EVENT	DATE
Preliminary entries	up to 30/03/2018
Announcement of the number of teams accepted by country	07/04/2018
Deadline for balance payment	30/09/2018
Deadline for final entry forms	14/10/2018

The maximum number of entries is **600** riders (excluding the Vintage category).

Any cancellation certified by the FMN will be reimbursed according to the art. 061.33 of the FIM ISDE rules 2018.

Contact for the entries:  
Cecilia Poblete  
Phone: +56 2 22725105  
Mail: [ISDE@fmc.cl](mailto:ISDE@fmc.cl)

### **3. STANDS FOR HOLDERS OF FIM LICENSES FOR MANUFACTURERS**

The holders of FIM licenses for manufacturers and accessories, who are interested on stands at the paddock area, must submit an application form in accordance with FIM rules stating the dimensions of the required area. These applications must be submitted to FIM ([gilles.vonburg@fim.ch](mailto:gilles.vonburg@fim.ch)) and by June 30th 2018. From this date onwards, the organizer can manage this area and may lease it to other interested parties.

### **4. PRESS CENTER**

The press center will be located at Hotel O'Higgins. The accreditation process will be at the secretariat office at Hotel O'Higgins.

The schedule of the press room will be as follow:

Date	From:	To:
November 8 <sup>th</sup>	14:00	18:00
November 9 <sup>th</sup> to 11 <sup>th</sup>	08:00	18:00
November 12 <sup>nd</sup> to 17 <sup>th</sup>	08:00	22:00

Press coordinator: Alexis Vásquez  
[cl-press@fim-isde.com](mailto:cl-press@fim-isde.com)  
Phone number: +56 9 6661 4156



## 5. ACCOMODATION

Further details on accommodation can be found in the following link: [www.fim-isde.com](http://www.fim-isde.com), Accommodation.

## 6. PADDOCK

The paddock will be located at “Estero Marga Marga” (33° 1'23.47"S : 71° 33'3.48"O) , down town Viña del Mar and will be open from November 6<sup>th</sup> 2018 at 12:00 till November 18<sup>th</sup> 2018 at 12:00

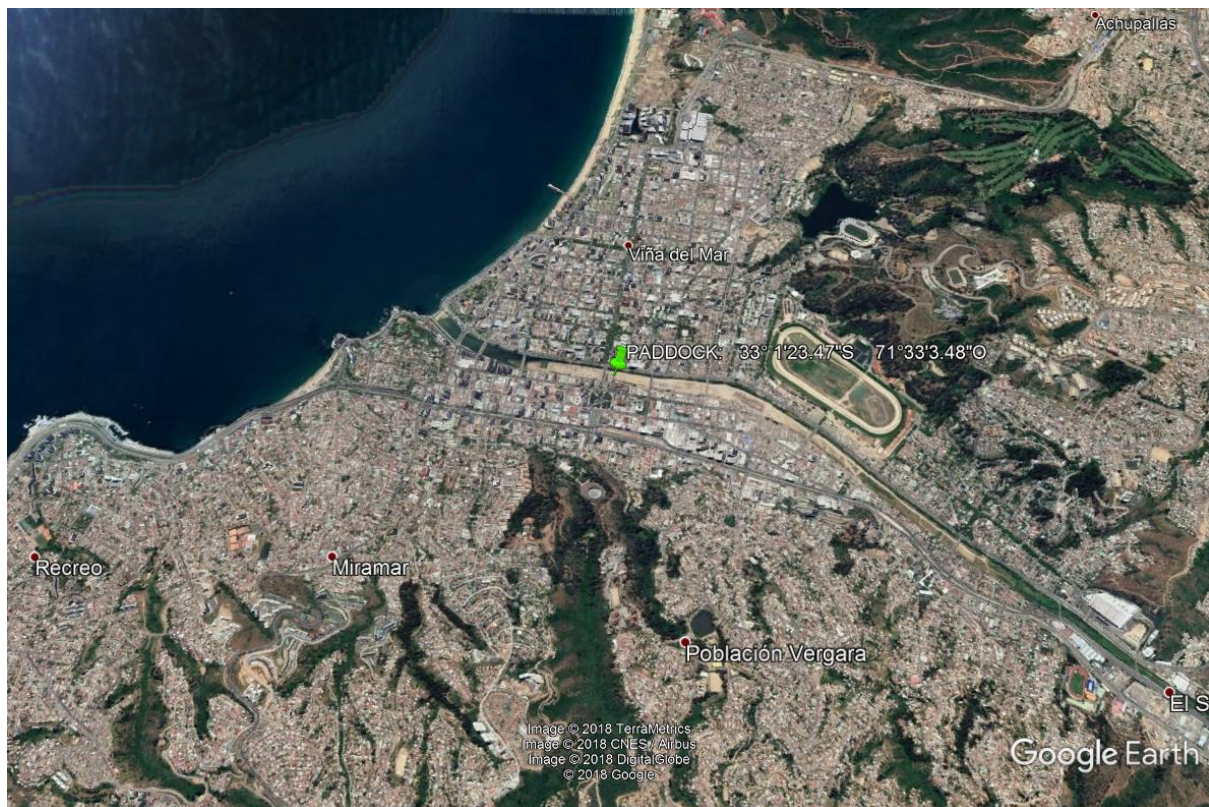
It is forbidden to stay at the paddock A (SIXDAYS Paddock) during the night.

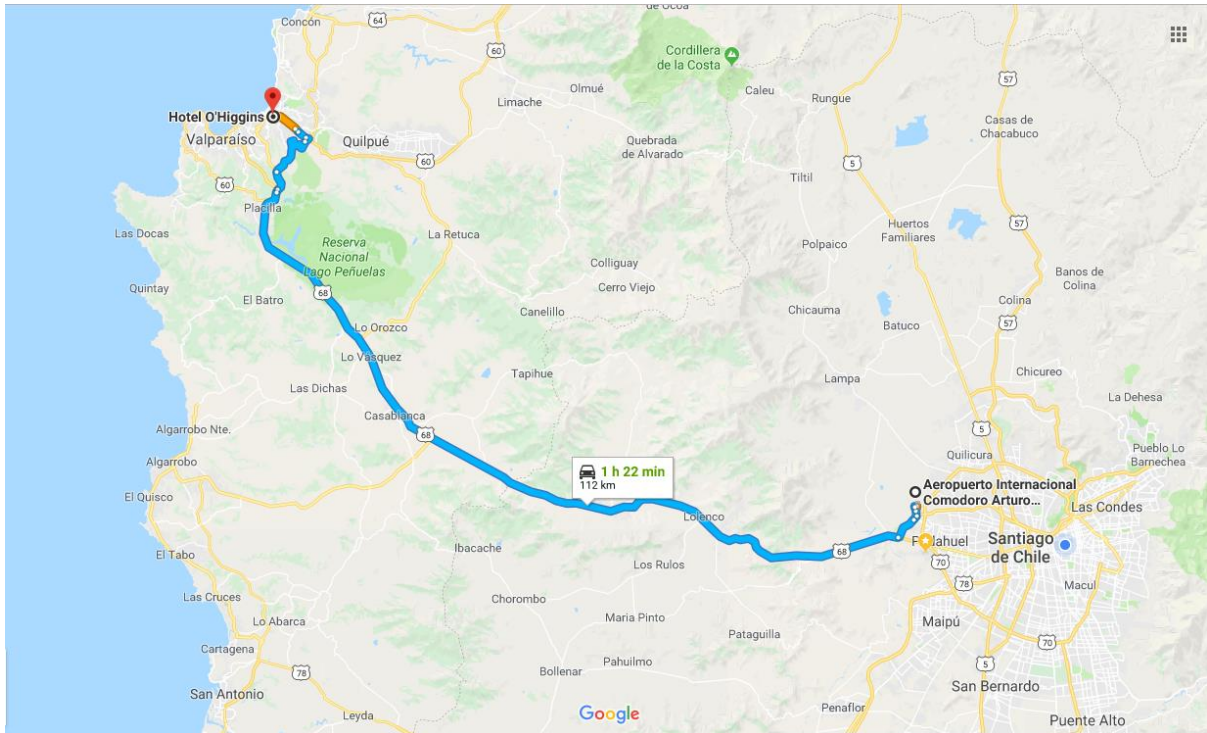
In the paddock B, next to SIXDAYS Paddock, it is allowed to sleep in campers etc...

Teams must submit a paddock form available at the web site <http://www.fim-isde.com>

There will not be charges for teams managing their own race logistic and assistance service.

For any entity proposing to riders / teams a commercial offer for bike rental, assistance race service, they have to contact FIM to define an agreement (mail to: [gilles.vonburg@fim.ch](mailto:gilles.vonburg@fim.ch))





## 7. PARC FERME

The Parc-Fermé will be located near the paddock.

## 8. ADMINISTRATIVE INSPECTION

The Federations must enter the riders via the online application provided by the organizer, indicating the necessary information such as name, FIM license number, motorcycle brand, rider's email, mobile number, etc.

The administrative inspection will take place in **HOTEL O'Higgins**, near the paddock, on **Thursday November 8<sup>th</sup> and Friday 9<sup>th</sup> 2018, from 8:30 to 19:00**. If necessary, remaining riders will be attended on **Saturday November 10<sup>th</sup> from 9:00 to 13:00**.

All delegates and team managers are required to undergo the accreditation process at the **ISDE Secretariat on November 7<sup>th</sup> 2018, from 14:00 to 20:00**.

The timetable of the administrative inspection for each country will be posted on the ISDE official website on November 1<sup>st</sup> and issued at the **ISDE Secretariat on Tuesday November 6<sup>th</sup> at 12:00**

Riders' requirements and documents needed for the administrative inspection:

- FIM license issued for this event,
  - Valid driving license,
  - Passport (or ID card),
  - Entry fee payment confirmation,
  - Filled-in organizer's form given to the team managers or delegates during accreditation,
  - Filled and signed entry form and Team declaration form signed and stamped (forms are available on the FIM ISDE website),
  - Original registration certificate of the bike (with frame number) and the vehicle registration plate,
  - Green card or similar certificate of international motor vehicle liability insurance valid in Chile. Should the rider not have a valid insurance certificate, the organizer requires the bike to be registered with a Chilean insurance company (at the expense of the riders).
- The riders must also sign the signing-on form at the administrative inspections.



At the administrative inspection, teams will receive the following passes.

	Bracelets			Parking Adhesives	
	Team Manager	Mechanic	Rider	Paddock/service	Free parking
World Trophy	1	3	4	2	3
Junior Trophy	1	2	3	2	2
Women World Trophy	1	2	3	2	2
Club Teams	1	2	3	2	2

## 9. TECHNICAL INSPECTION

The technical inspection will take place near the paddock according to the following schedule:

Date	Time
Thursday, November 8 <sup>th</sup>	8:30 to 18:00
Friday, November 9 <sup>th</sup>	8:30 to 18:00
Saturday, November 10 <sup>th</sup>	8:30 to 13:00

The timetable of the technical inspection for each country will be posted on the ISDE official website on November 1<sup>st</sup> and issued at the ISDE Secretariat on **Tuesday November 6<sup>th</sup> at 12:00.**

Requirements and documents needed for the technical inspection:

- Filled-in organizer's form
- Original registration certificate of the bike (with frame number) and the vehicle registration plate.

The motorcycles have to be in conformity with the Articles 061.41, 061.42, 061.43 and 061.44.

## 10. CLASSES

- Enduro 1: From 100 cc to 125 cc 2-stroke and from 175 cc to 250 cc 4-stroke
- Enduro 2: From 175 cc to 250 cc 2-stroke and from 290 cc to 450 cc 4-stroke
- Enduro 3: From 290 cc to 500 cc 2-stroke and from 475 cc to 650 cc 4-stroke

### Vintage categories

- Classic 72: motorcycles manufactured until 1972
- Classic 76: motorcycles manufactured until 1976
- Classic 79: motorcycles manufactured until 1979
- Classic 82: motorcycles manufactured until 1982
- Category EVO 86: motorcycles manufactured until 1986

## 11. PRACTICE AREA

The practice area will be located at **Estero Marga Marga (next to the Paddock)**. Its access will be duly signed, and internal direction will be signed with ribbons and arrows. It will be open from November 8<sup>th</sup> to 9<sup>th</sup> from 9:00 to 18:00 and Saturday November 10<sup>th</sup> from 9:00 to 12:00.

## 12. ADVERTISING

It is strictly forbidden to place any banners, balloons, boards, flags, etc. at the ISDE Secretariat, paddock area, parking lots, special test tracks, official route and any other places related to the event without the organizer's written permission.

## 13. ENVIRONMENT

Every rider must respect the FIM rules on Environment and must be equipped with a protective mat under the motorcycle.

A fire extinguisher in good-working is compulsory at each point with service.



#### **14. NUMBER PLATES AND STARTING ORDER**

Number plates and starting order will be in compliance with the FIM regulations.

Advertising on the number background is reserved for the organizer and FIM partners.

The race number and the logos of the ISDE 2018 partners will be put on the number plate provided by the organizer.

The riders entered the ISDE have been automatically informed of this obligation via the official FIM ISDE 2018 website. At no time, during the event period, they can't refuse to run with number plates and advertising provided by the organizer. Likewise, it's forbidden to hide a part or the whole partners appearing on the number plates.

#### **15. OPENING OF THE ISDE**

The opening ceremony will take place at Viña del Mar on Saturday November 10<sup>th</sup> at 19:00. The organizer will give precise instructions for the nations parade and activities during the ceremony.

#### **16. COURSE**

The total length of the course, including special tests, will be between 1250 kms and 1600 kms.

The riders will do two laps each day. There will be a transfer to a Time check with assistance to avoid the city traffic.

Day 1 and 2: the track will go to the north with 3 different special test, two laps (6 specials in total each day)

Day 3 and 4: the track will go to the east of Viña with 3 different special test, two laps (6 specials in total each day)

Day 5: the track will go to the south east of Viña with 3 different special test, two laps (6 specials in total)

Day 6: 1 time check with service and the final test on the Motocross Track.

See detail in Appendix 1

#### **17. HIGHWAY CODE FOR OPERATION ON PRIVATE HIGHWAYS AND PUBLIC ROADS**

All riders and participants in the contest must respect the national traffic code for operation on all public and private roads and road crossings. They must conform to all instructions that are given by police, by the traffic marshals and by the race management. Riders failing to observe these instructions may be disqualified from the contest or face other penalties of the sporting code.

#### **18. FUEL AND TYRES**

Any fuel used must be in conformity with the article 01.63 of the FIM Technical Regulations for Enduro. All tyres used on the competition motorcycles must comply with the article 01.51 of the FIM Technical Regulations for Enduro.

#### **19. INTERPRETATION OF REGULATIONS AND RULES**

The interpretation of the FIM regulations and rules for ISDE and of the supplementary Regulation approved for this event is in the competency of the sporting jurisdiction approved by the FIM for this event.

#### **20. CLOSING CEREMONY AND AWARDS**

The prize-giving ceremony will take place on the podium after the Motocross, final test of the ISDE, Saturday November 17<sup>th</sup>, as of 17:00.



## 21. INSURANCE

The insurance of the participants is regulated by the provisions of Article 110.1.1 and 110.3 of the FIM Sporting Code and Article 061.65 of the FIM ISDE Regulations.

## 22. OFFICIALS

### RACE DIRECTION

FIM Race Direction:	Pedro Mariano	licence n° 3163
FIM Track Inspector:	Maurizio Micheluz	licence n° 12352
Clerk of the Course:	José Tomás Díaz	licence n° 11969
		SuperLicence n° 3168

### FIM STEWARD

FIM Chief Steward:	Heinrich Schmidt	licence n° 3167
2nd FIM Steward:	Jean-Pierre Ipuy	licence n° 11175
FMNR Steward:	Mario Marin	licence n° 12852
FIM Vintage Chief Steward:	Jean-Paul Veaudequin	licence n° 11181

### OFFICIALS

FIM Technical Director:	Roger Johansson	licence n° 11659
2 <sup>nd</sup> FIM Technical Director:	Andres Zalazar	licence n° 12989
FMNR Chief Technical Steward:	tbc	licence n° tbc
FMNR Technical Steward:	tbc	licence n° tbc
FIM Environmental Delegate:	Peter Gregory	licence n° 11062
Environmental Steward:	Velia Hargreaves	licence n° 12882
FMNR Safety Officer:	tbc	licence n° tbc
Chief Timekeeper:	Alexandre LAOPODIS	licence n° 12170
Media Manager:	tbc	
Secretary of the event:	tbc	

### REPRESENTING FIM

CEN Director:	John Collins
Communication Manager:	Isabelle Larivière
CEN Coordinator:	Gregory Ricci
Sales and Marketing Coordinator:	Gilles von Burg

### TRANSPONDERS:

Transponders will be distributed before entering the Parc-Fermé according to the timetable assigned to each country for proceeding with the technical inspection.

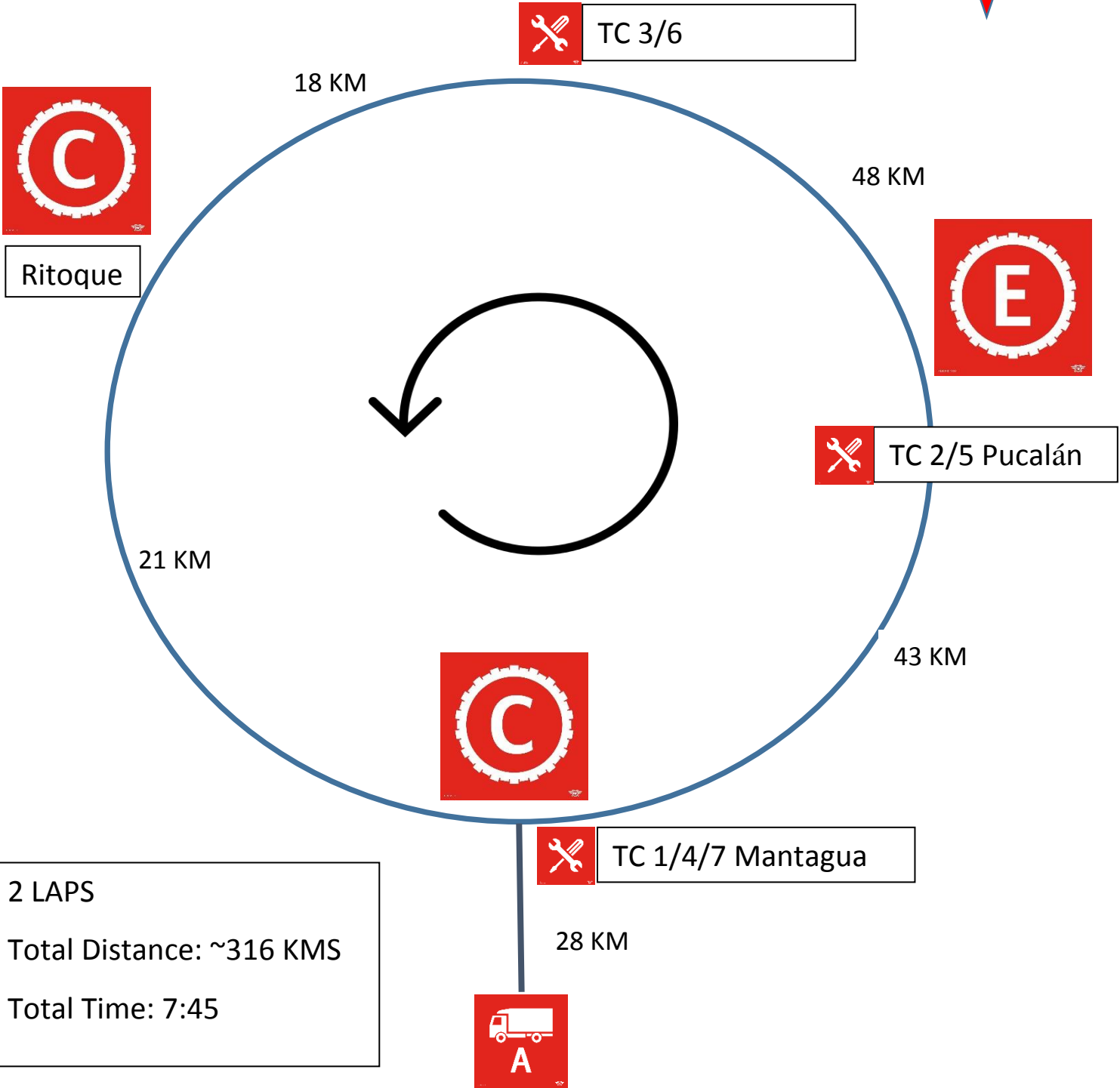
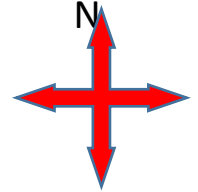
Riders will be able to buy transponder holders at the administrative office. The riders having lost or forgotten their transponder will pay an amount of 250 euros.





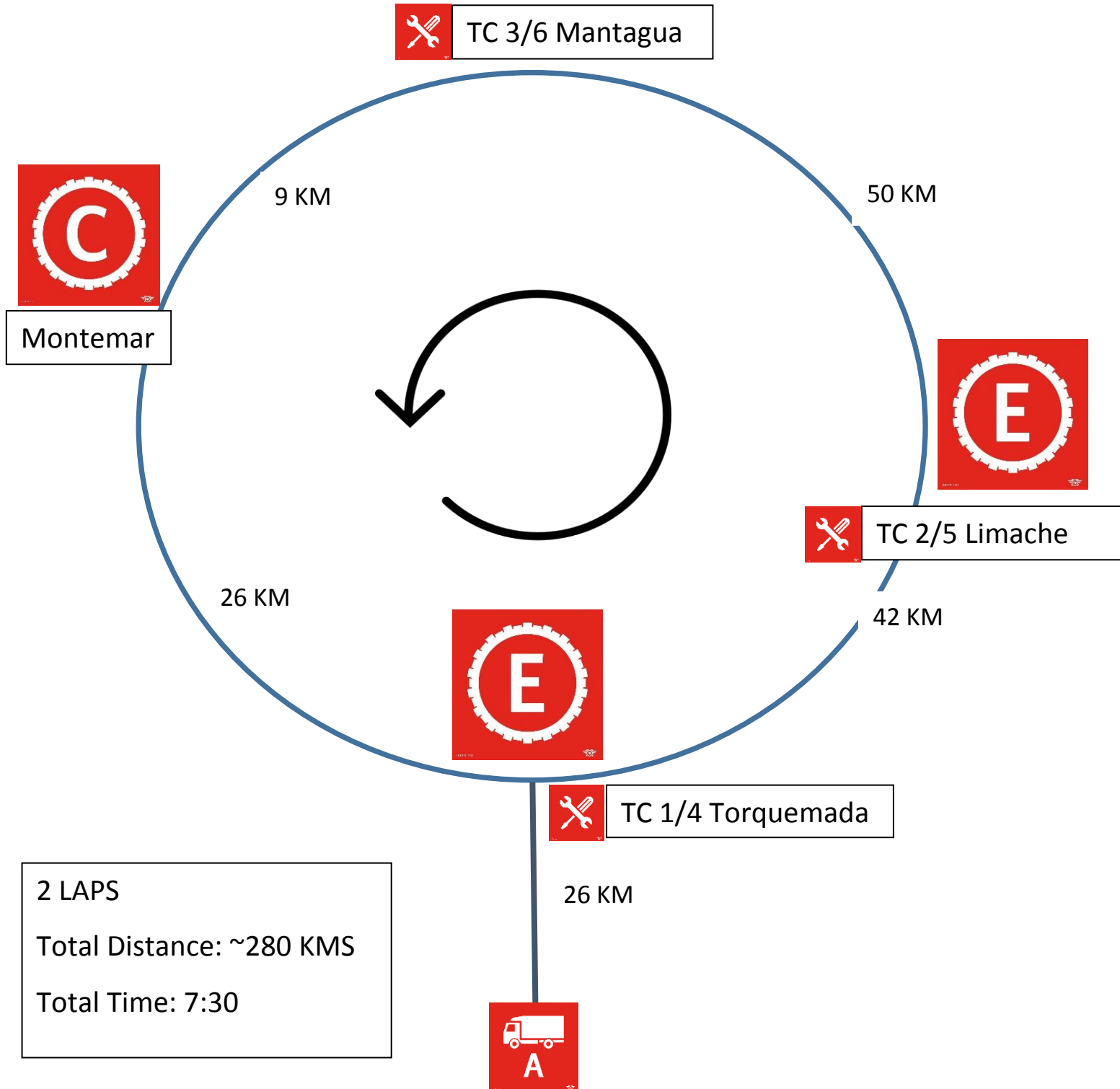
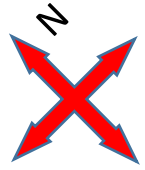
# Appendix 1

## DAY 1 – 2 THE PACIFIC CHALLENGE



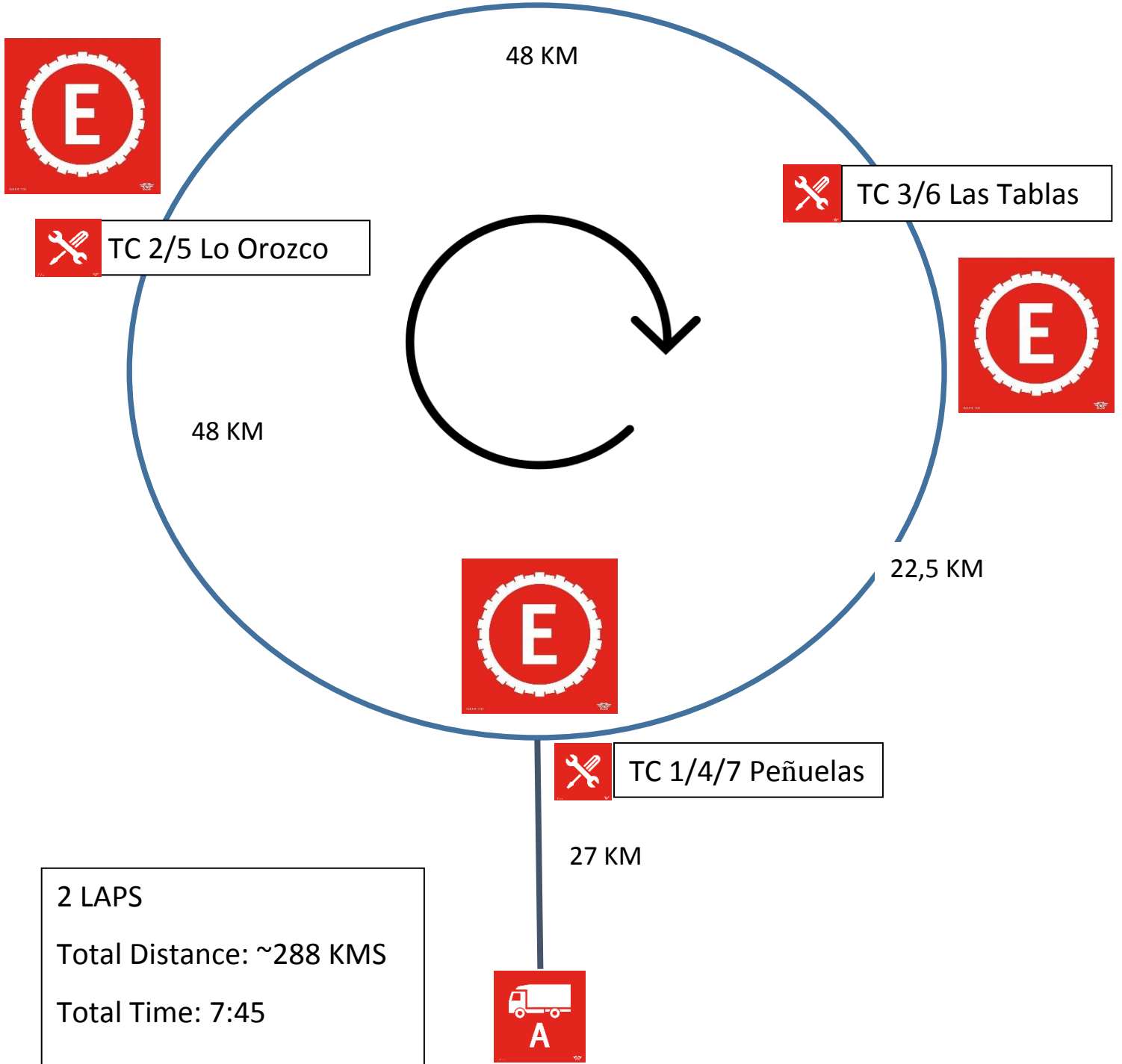
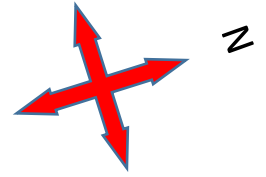


# DAY 3 – 4 VISITING LIMACHE



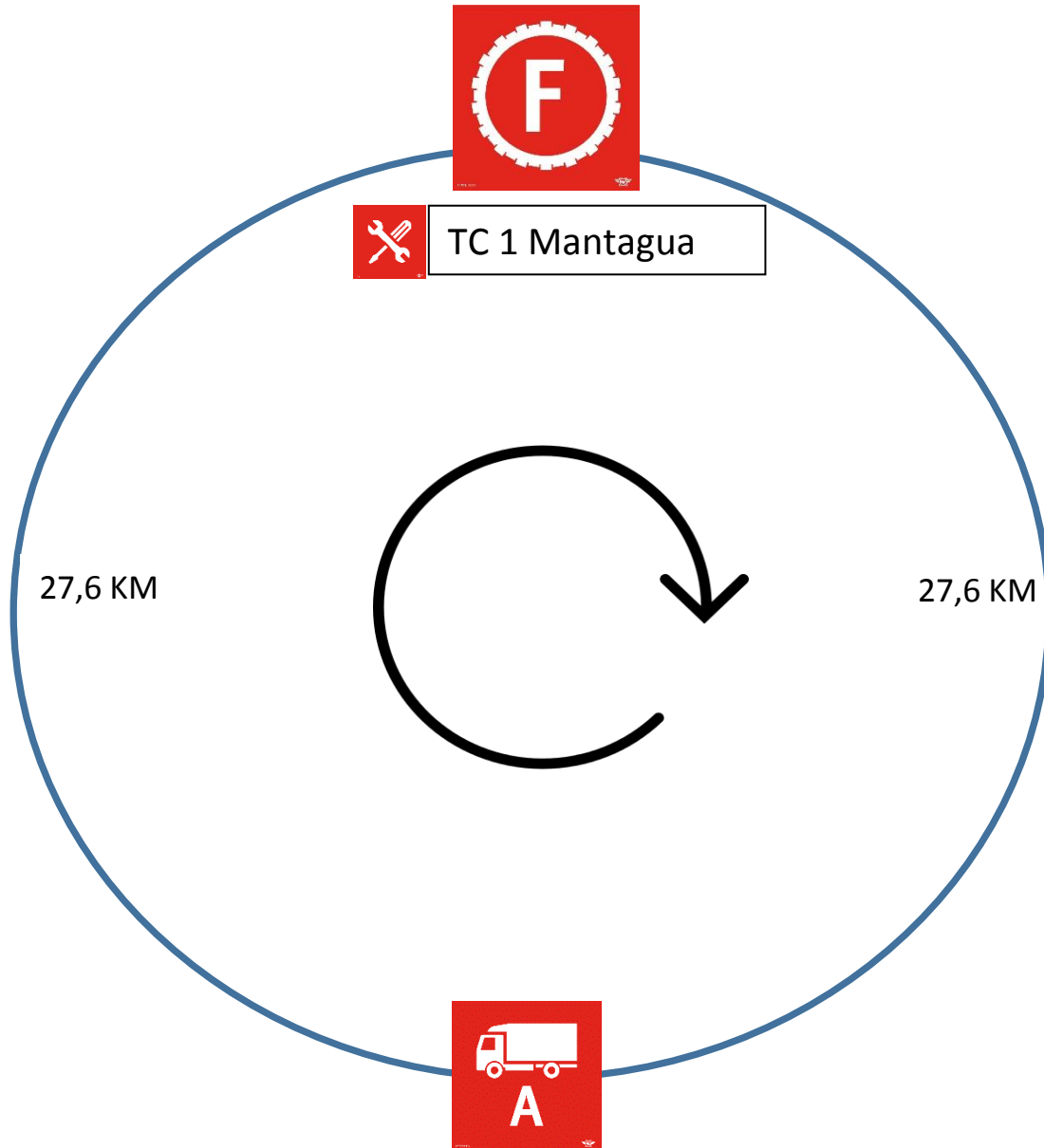
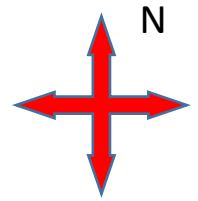


# DAY 5 Peñuelas lake & woods





# DAY 6 Final Moto Cross





Hotel O'Higgins will be the head quarters for the FIM ISDE 2018.

Race Direction, Secretariat, Time Keeping, Press Room and FIM TV Office will be located at the hotel, 50 meters from the Paddock.